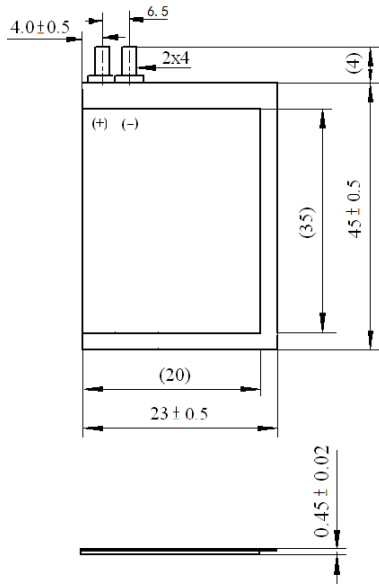
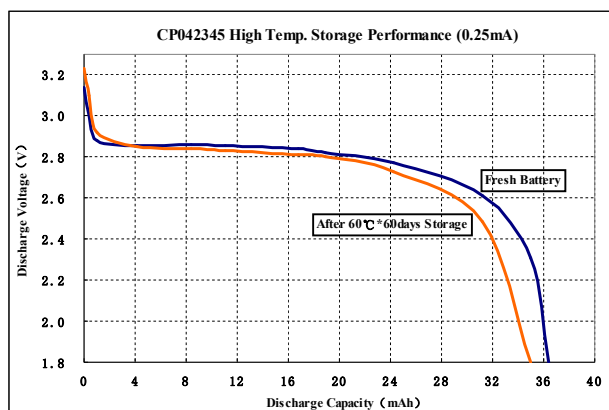
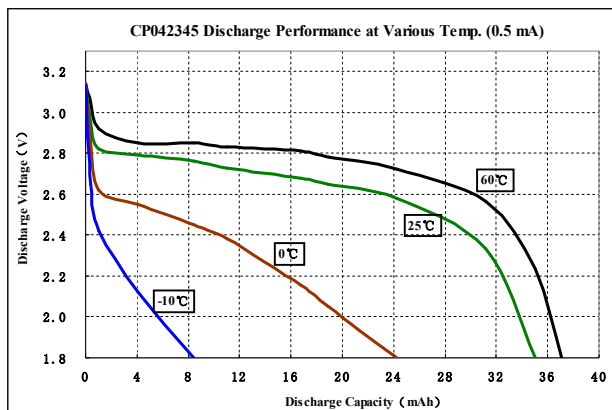
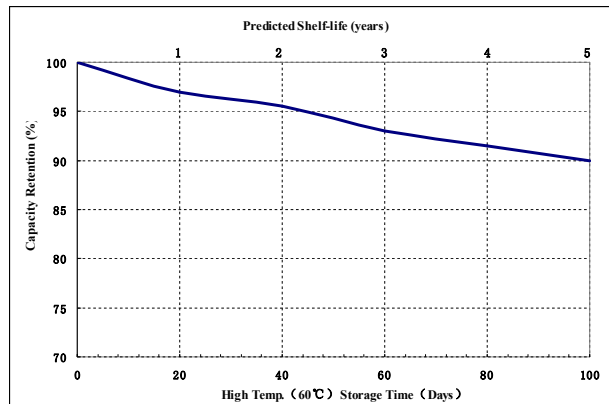
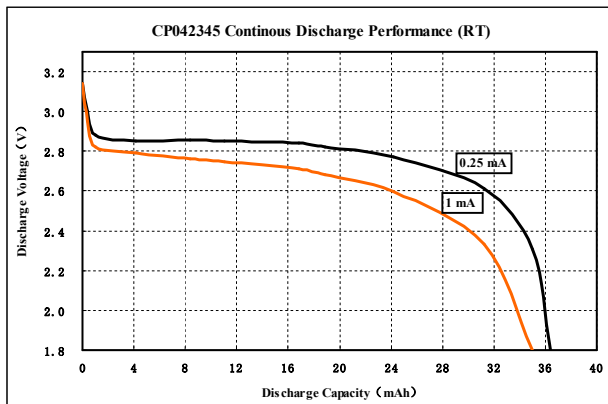


## Dimensions and Specifications



<b>Chemical System:</b>	Lithium - Manganese Dioxide (Li - MnO <sub>2</sub> )
<b>Designation:</b>	CP042345
<b>Nominal Voltage:</b>	3.0 volts
<b>Nominal Capacity:</b>	35 mAh
<b>Operating Temp:</b>	-20°C to 60°C (-4°F to 140°F)
<b>Storage Temp:</b>	-40°C to 60°C (-40°F to 140°F)
<b>Max Discharge:</b>	2 mA continuous, 4mA pulse
<b>Safety Features:</b>	Aluminum Laminate Cell Packaging
<b>Typical Weight:</b>	0.9 grams
<b>Terminal:</b>	Ni (-)/Ni(+) Tabs
<b>Shelf Life:</b>	10 Years
<b>Typical Li Content:</b>	0.01 grams
<b>UL/UN Listed:</b>	UN38.3
<b>Shipping:</b>	Excepted when packaged in containers less than 2.5 Kg. For complete details, please reference: Special Provision A45 of the International Air Regulation Global (except US): Transport Association Dangerous Goods Regulation United States: 49 CFR 173.185

## Battery Performance Graphs



### Important Notice

Information and contents in this data sheet are for reference purposes only. They do not constitute a warranty.